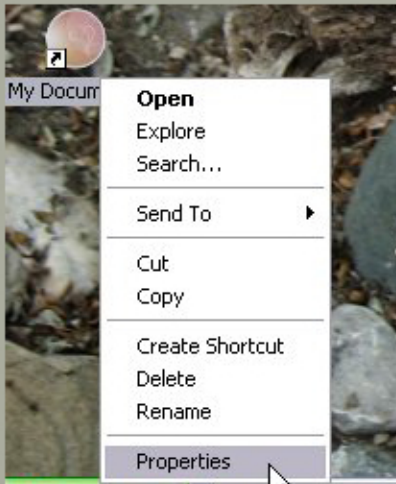


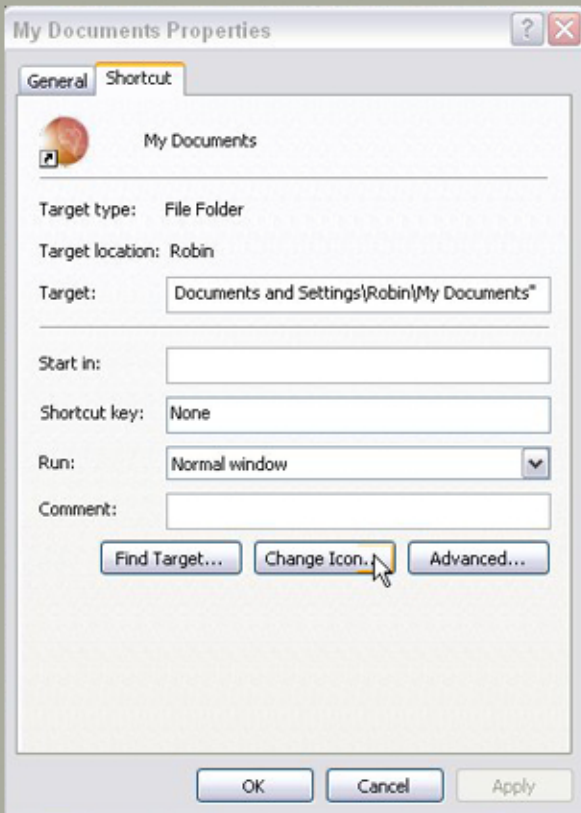
LOADING ICONS

1. **RIGHT CLICK** a shortcut on your desktop >

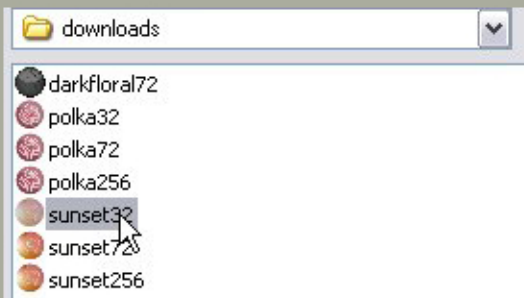
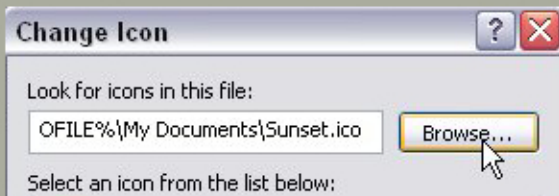
2. Move down to **PROPERTIES** and click.



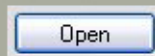
3. Under the **SHORTCUT TAB** click **CHANGE ICON**.



4. **CLICK BROWSE** and find the directory your new icon file is in, make sure it is the correct size... 32 72 ...etc.



SELECT >



New Icon >

